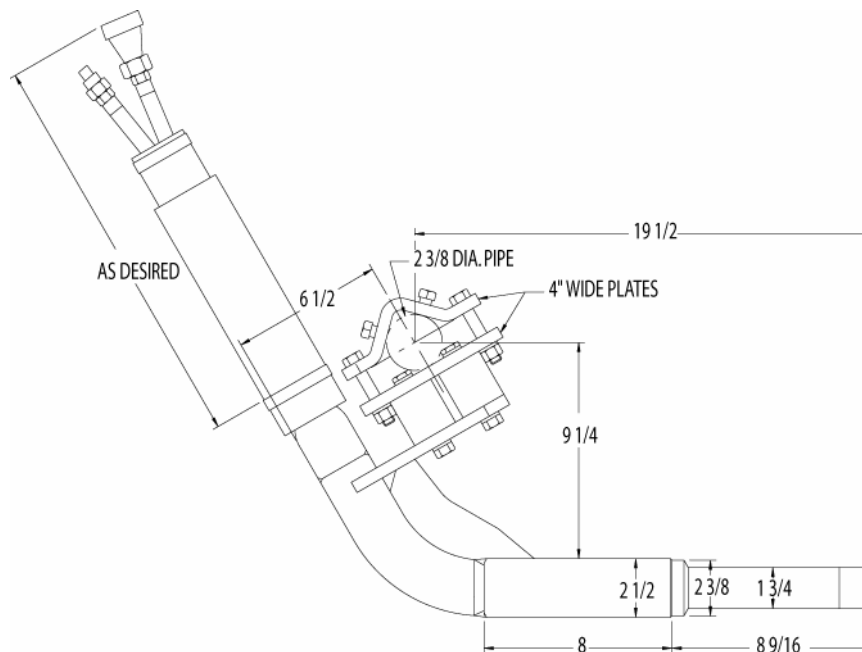


HV-3 Series Specifications

HEAD DIAMETER -----	1-3/4" (44.45mm)
CENTRIFUGAL FORCE -----	796lbs. (3540.78N)
AMPLITUDE-----	0.040" (1.01mm)
DIAMETER OF INFLUENCE @ 10,500VPM-----	11.00"-16.00" (279.4mm-406.4mm)
DIAMETER OF INFLUENCE @ 8,000VPM -----	9.00"-13.00" (228.6mm-330.2mm)
MAXIMUM FLOW -----	4GPM (15.14l/min)
NORMAL OPERATING PRESSURE -----	800-1300PSI (5.51-8.96MPa)
BACK PRESSURE MAXIMUM-----	150PSI (1.03MPa)
RATED FOR PRESSURE UP TO 2500PSI (17.24MPa)	

MODEL HV-3P



Specifications are nominal values and will vary depending on the size and range of aggregate, and the slump of the concrete. Specifications taken at 10,500VPM.

277 North Main Street
PO Box 367
Mansfield, OH 44902

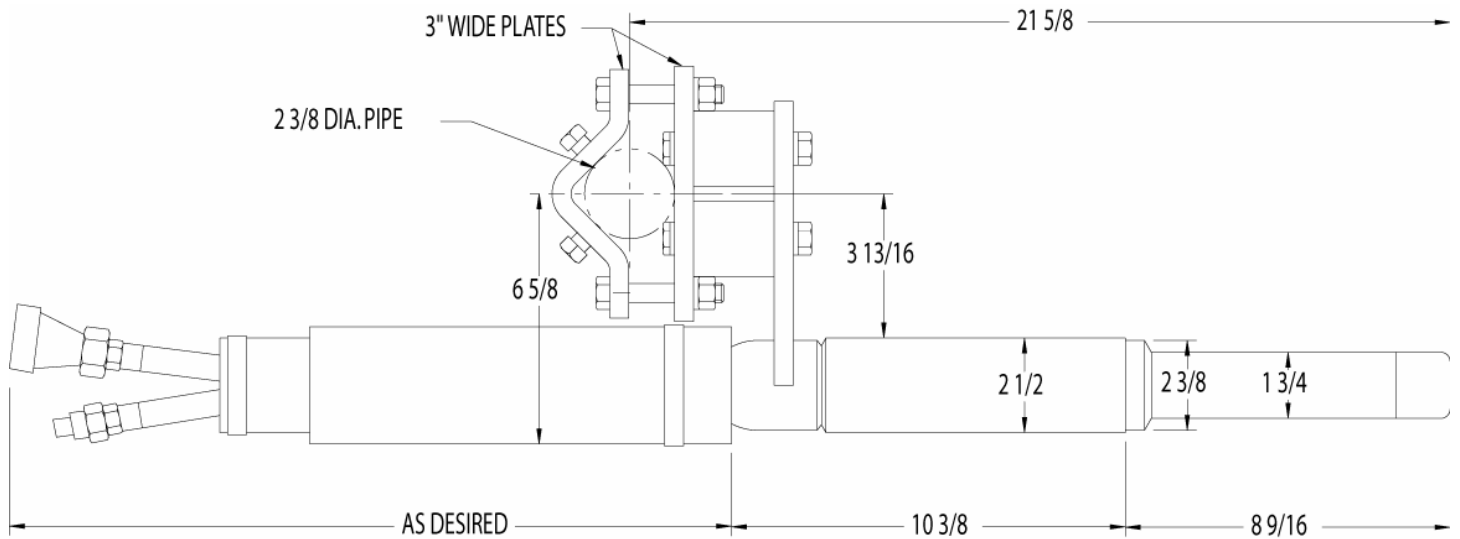
www.minnich-mfg.com
e-mail: sales@minnich-mfg.com

Phone: 419.524.1000
Toll Free: 800.524.1033
Fax: 419.524.4000

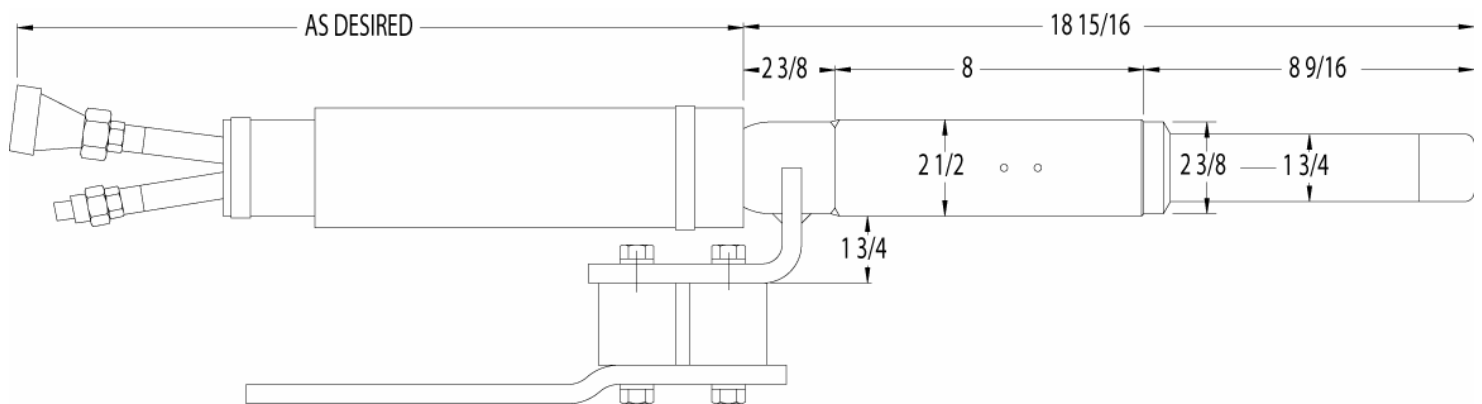
m **minnich**

CONCRETE VIBRATORS & DOWEL PIN DRILLS

MODEL HV-3B



MODEL HV-3S1



*Specifications are nominal values and will vary depending on the size and range of aggregate, and the slump of the concrete.
Specifications taken at 10,500VPM.*

277 North Main Street
PO Box 367
Mansfield, OH 44902

www.minnich-mfg.com
e-mail: sales@minnich-mfg.com

Phone: 419.524.1000
Toll Free: 800.524.1033
Fax: 419.524.4000